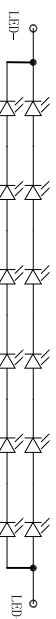


REV	DESCRIPTION:	DATE
V00	First Issue	

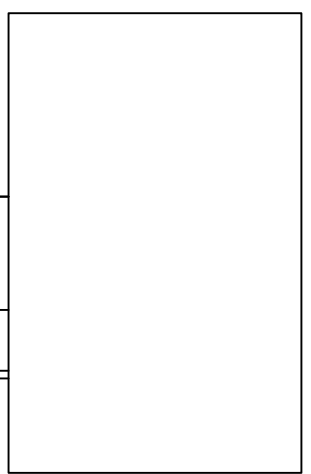
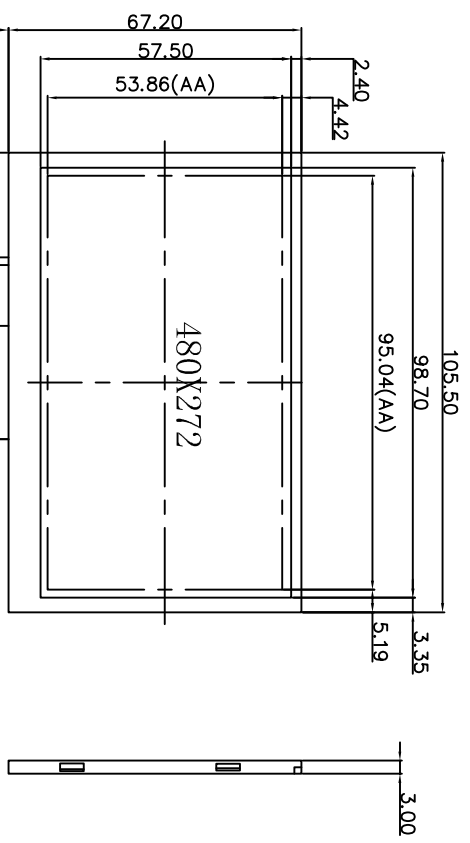
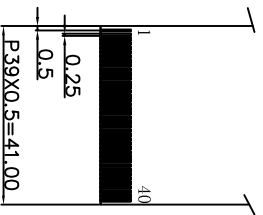
接口定义:

1	LED-	26	B5
2	LED+	27	B6
3	GND	28	B7
4	VDD	29	DGND
5	R0	30	DCLK
6	R1	31	DISP
7	R2	32	HSTYNG
8	R3	33	VSYNG
9	R4	34	DE
10	R5	35	NC
11	R6	36	GND
12	R7	37	XR
13	G0	38	YD
14	G1	39	XL
15	G2	40	YU
16	G3	41	
17	G4	42	
18	G5	43	
19	G6	44	
20	G7	45	
21	B0	46	
22	B1	47	
23	B2	48	
24	B3	49	
25	B4	50	



V_F=1.9, 2K(OPM)
BACKLIGHT CIRCUIT

比例: 1:2



NOTES:

1. DISPLAY TYPE: 4.3" TFT, TRANSMISSIVE
2. VIEWING DIRECTION: 6 0'clock
3. BACKLIGHT: 12 CHIP-WHITE LED
4. BL INPUT CURRENT: 40 mA
5. OPERATING TEMP: -20° C ~ +70° C
6. STORAGE TEMP: -30° C ~ +80° C
7. GENERAL TOLERANCE: ±0.2

LCDRONIC		UNIT: MM	SIZE: A4	Scale: 1/1	GENERAL TOLERANCE: ±0.2 Angle=1°	PROJECT NO	TFT5.0-480272-40	SHEET:1/1
		DESIGNED:	DATE:	DATE:				
CHECKED:	DATE:	APPROVED:	DATE:	PART NO.	REV: V00	PRJ(3)		